

preliminary not for construction



architect

general notes

integrated DESIGN group  
architects | bathurst penrith sydney



copyright  
integratedDESIGNgroup pt  
420 84 115 006 029

bathurst | 02 6392 6206  
penrith | 02 4752 4400  
sydney | 02 9754 4100

nominated architects  
tony mcbratney reg16273  
simon thorne reg17065

nib@dparchitects.com.au  
www.dparchitects.com.au

1. figured dimensions take precedence over scaled drawings
2. contractors to check and verify all levels datum and dimensions on site
3. all materials and workmanship to be in accordance with current written manufacturers instructions local regulations and SAA codes
4. conflicting information to be brought to notice of the architect and clarification sought before proceeding with any works
5. all drawings are not for construction and are subject to further design development, consultant input, council and legislative requirements.

## area schedule

GFA	
lower ground floor	950.53 m <sup>2</sup>
upper ground floor	1858.27 m <sup>2</sup>
first floor	505.23 m <sup>2</sup>
TOTAL	3,404.03 m <sup>2</sup>

## use breakdown

church (incl. mezzanine)	916.47 m <sup>2</sup>
waiting room (upper + lower)	246.63 m <sup>2</sup>
multipurpose	783.77 m <sup>2</sup>
servery	36.16 m <sup>2</sup>
kitchen	62.60 m <sup>2</sup>
play area	170.65 m <sup>2</sup>
offices	262.20 m <sup>2</sup>
storage	223.12 m <sup>2</sup>

date	issue	amendment
1/8/18	A	issue to consultant
22/8/18	B	issue for pre-DA
9/11/18	C	issue for coordination
9/11/18	D	issue for coordination
13/11/18	E	issue for coordination
14/11/18	F	issue for coordination
16/11/18	G	issue for coordination
19/11/18	H	issue for coordination
20/11/18	I	issue for final coordination
27/2/19	J	issue for response to council's RFI
20/5/19	K	issue for response to council's RFI

title

## site plan

new church facility  
northlakes salvos | CAMERON PARK

project ref: SAL18007  
drawn: CQ  
checked: AE  
scale: 1:700 @ a2



DA  
0100

issue  
K



preliminary not for construction



**DA Approved:**  
DA/1250/2018 - Seniors  
Housing (Residential Aged  
Care Facility)

architect

general notes

integrated **DESIGN** group  
architects | bathurst penrith sydney

1. figured dimensions take precedence over scaled drawings
2. contractors to check and verify all levels datum and dimensions on site
3. all materials and workmanship to be in accordance with current written manufacturers instructions local regulations and SAA codes
4. conflicting information to be brought to notice of the architect and clarification sought before proceeding with any works
5. all drawings are not for construction and are subject to further design development, consultant input, council and legislative requirements.



copyright  
integratedDESIGNgroup pt  
420 84 115 006 929

bathurst | 02 6392 6206  
penrith | 02 4752 4408  
sydney | 02 9754 4100  
nominated architects  
tony mcbratney reg16273  
simon thorne reg17065  
nrb@dpdarchitects.com.au  
www.dpdarchitects.com.au

## area schedule

GFA	
lower ground floor	950.53 m <sup>2</sup>
upper ground floor	1858.27 m <sup>2</sup>
first floor	505.23 m <sup>2</sup>
<b>TOTAL</b>	<b>3,404.03 m<sup>2</sup></b>

## use breakdown

church (incl. mezzanine)	916.47 m <sup>2</sup>
waiting room (upper + lower)	246.63 m <sup>2</sup>
multipurpose	783.77 m <sup>2</sup>
servery	36.16 m <sup>2</sup>
kitchen	62.60 m <sup>2</sup>
play area	170.85 m <sup>2</sup>
offices	262.20 m <sup>2</sup>
storage	223.12 m <sup>2</sup>

date	issue	amendment
19/2/19	A	issue for consultant coordination
27/2/19	B	issue for response to council's RFI
20/5/19	C	issue for response to council's RFI

## carpark plan

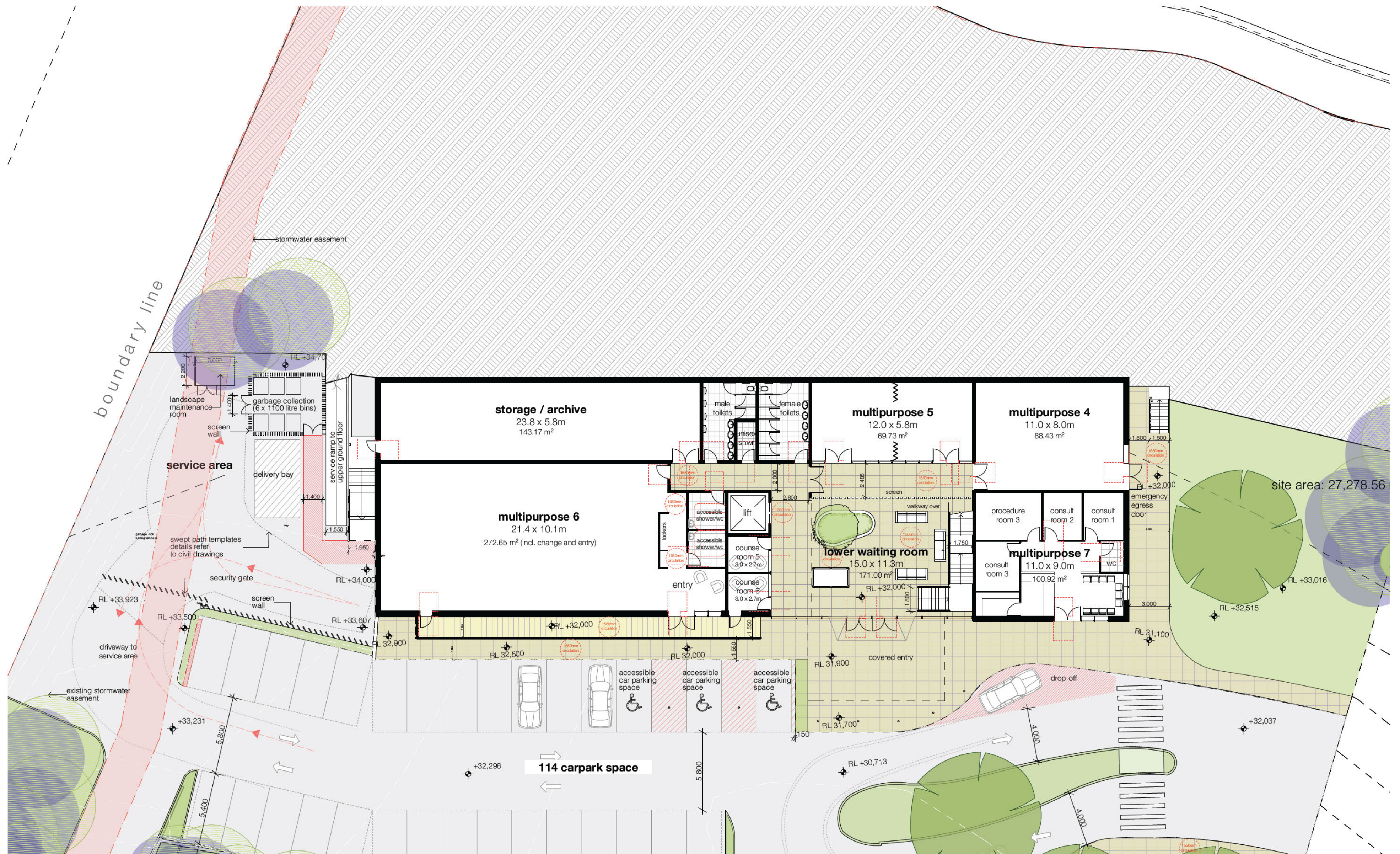
new church facility  
northlakes salvos | CAMERON PARK

project ref: SAL18007  
drawn: CQ  
checked: AE  
scale: 1:300 @ a2



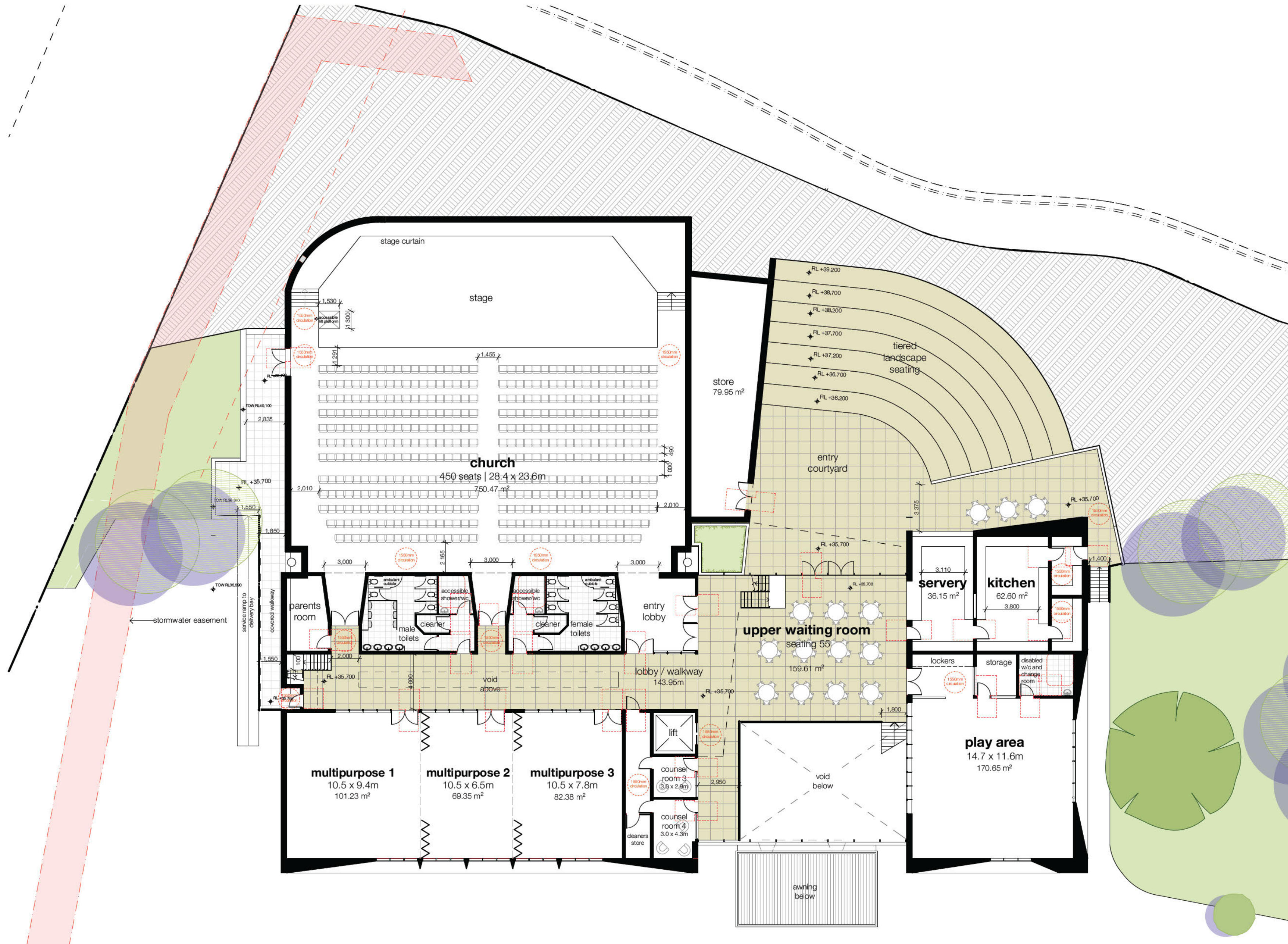
**DA**  
0101  
**issue**  
**C**







preliminary not for construction



architect

general notes

integrated **DESIGN** group  
architects | bathurst penrith sydney

Member  
Australian  
Institute of  
Architectscopyright  
integratedDESIGNgroup pt  
abn 84 115 008 329nominated architects  
tony mcburney reg#5273  
simon thorne reg#7093bathurst (02) 6332 6206  
penrith (02) 4732 4430  
sydney (02) 9764 6100  
info@idgarchitects.com.au  
www.idgarchitects.com.au

1. figured dimensions take precedence over scaled drawings
2. contractors to check and verify all levels datum and dimensions on site
3. all materials and workmanship to be in accordance with current written manufacturers instructions local regulations and SAA codes
4. conflicting information to be brought to notice of the architect and clarification sought before proceeding with any works
5. all drawings are not for construction and are subject to further design development, consultant input, council and legislative requirements.

**area schedule**

GFA	
lower ground floor	950.53 m <sup>2</sup>
upper ground floor	1858.27 m <sup>2</sup>
first floor	595.23 m <sup>2</sup>
<b>TOTAL</b>	<b>3,404.03 m<sup>2</sup></b>

**use breakdown**

church (incl. mezzanine)	916.47 m <sup>2</sup>
waiting room (upper + lower)	246.63 m <sup>2</sup>
multipurpose	783.77 m <sup>2</sup>
servery	36.15 m <sup>2</sup>
kitchen	62.60 m <sup>2</sup>
play area	170.65 m <sup>2</sup>
offices	262.20 m <sup>2</sup>
storage	223.12 m <sup>2</sup>

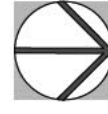
date	issue	amendment
22/8/18	A	issue for pre-DA
29/8/18	B	amendments for pre-DA
9/11/18	C	issue for coordination
9/11/18	D	issue for coordination
12/11/18	E	issue for coordination
16/11/18	F	issue for coordination
20/11/18	G	issue for final coordination
27/2/19	H	issue for consultant coordination
27/2/19	I	issue for response to council's RFI
21/5/19	J	issue for response to council's RFI

title

**upper ground floor**  
new church facility  
northlakes salvos | CAMERON PARK

project ref:  
drawn:  
checked:  
scale:

SAL18007  
CQ  
AE  
1:200 @ a2

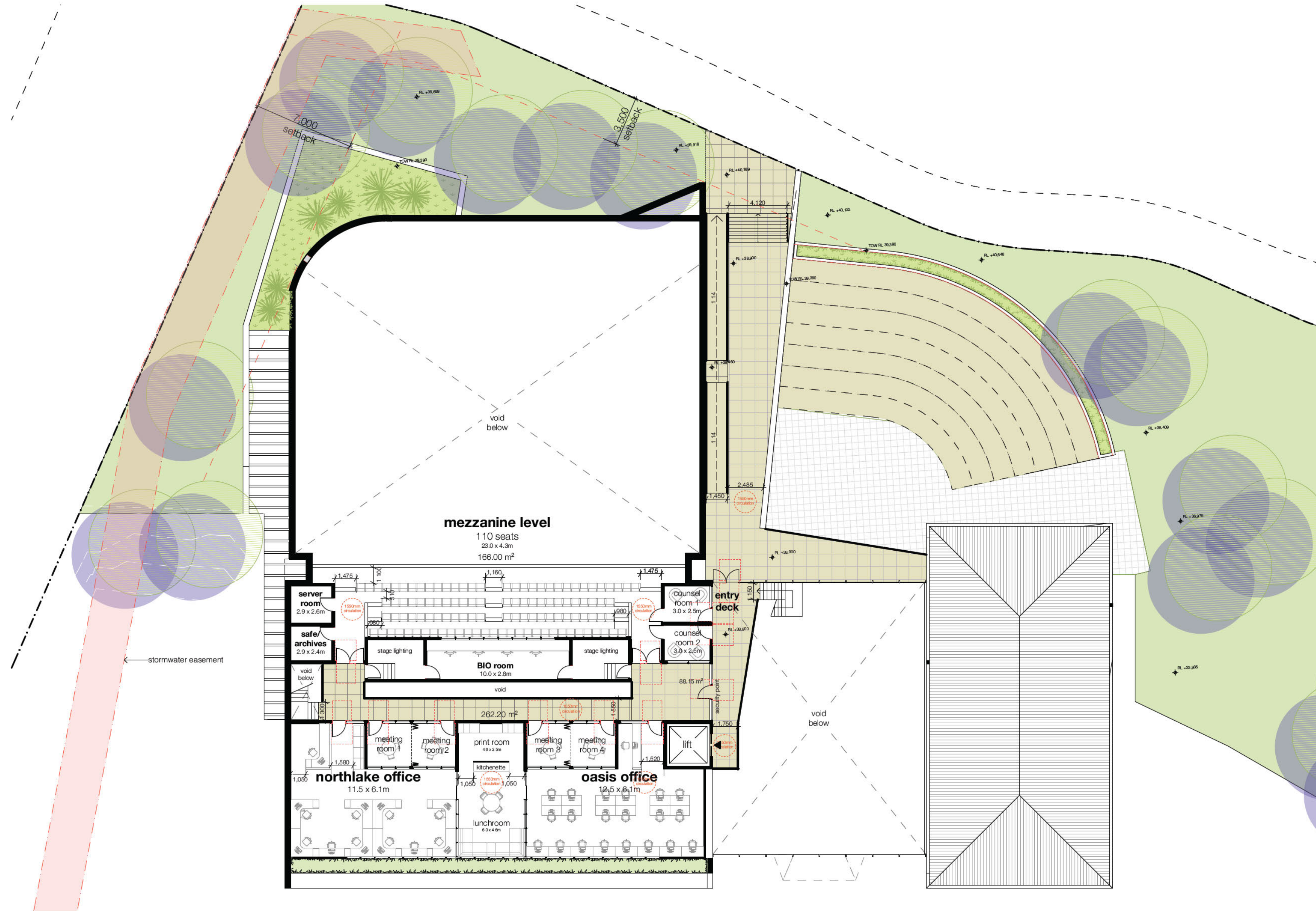


DA  
1101

issue  
J



preliminary not for construction



architect

general notes

integrated **DESIGN** group  
architects | bathurst penrith sydney



copyright  
integratedDESIGNgroup pt  
abn 64 115 008 329

nominated architects  
tony mcburney reg#5273  
simon thorne reg#7093

bathurst (02) 6332 6206  
penrith (02) 4732 4430  
sydney (02) 9764 6100  
info@idgarchitects.com.au  
www.idgarchitects.com.au

1. figured dimensions take precedence over scaled drawings
2. contractors to check and verify all levels datum and dimensions on site
3. all materials and workmanship to be in accordance with current written manufacturers instructions local regulations and SAA codes
4. conflicting information to be brought to notice of the architect and clarification sought before proceeding with any works
5. all drawings are not for construction and are subject to further design development, consultant input, council and legislative requirements.

**area schedule**

GFA	
lower ground floor	950.53 m <sup>2</sup>
upper ground floor	1858.27 m <sup>2</sup>
first floor	595.23 m <sup>2</sup>
<b>TOTAL</b>	<b>3,404.03 m<sup>2</sup></b>

**use breakdown**

church (incl. mezzanine)	916.47 m <sup>2</sup>
waiting room (upper + lower)	246.63 m <sup>2</sup>
multipurpose	783.77 m <sup>2</sup>
servery	36.15 m <sup>2</sup>
kitchen	62.60 m <sup>2</sup>
play area	170.65 m <sup>2</sup>
offices	262.20 m <sup>2</sup>
storage	223.12 m <sup>2</sup>

date issue amendment

22/8/18	A	issue for pre-DA
9/11/18	B	issue for coordination
9/11/18	C	issue for coordination
12/11/18	D	issue for coordination
16/11/18	E	issue for coordination
20/11/18	F	issue for final coordination
27/2/19	G	issue for consultant coordination
27/2/19	H	issue for response to council's RFI
21/5/19	I	issue for response to council's RFI

title

**first floor plan**  
new church facility  
northlakes salvos | CAMERON PARK

project ref:  
drawn:  
checked:  
scale:

SAL18007  
CQ  
AE  
1:200 @ a2

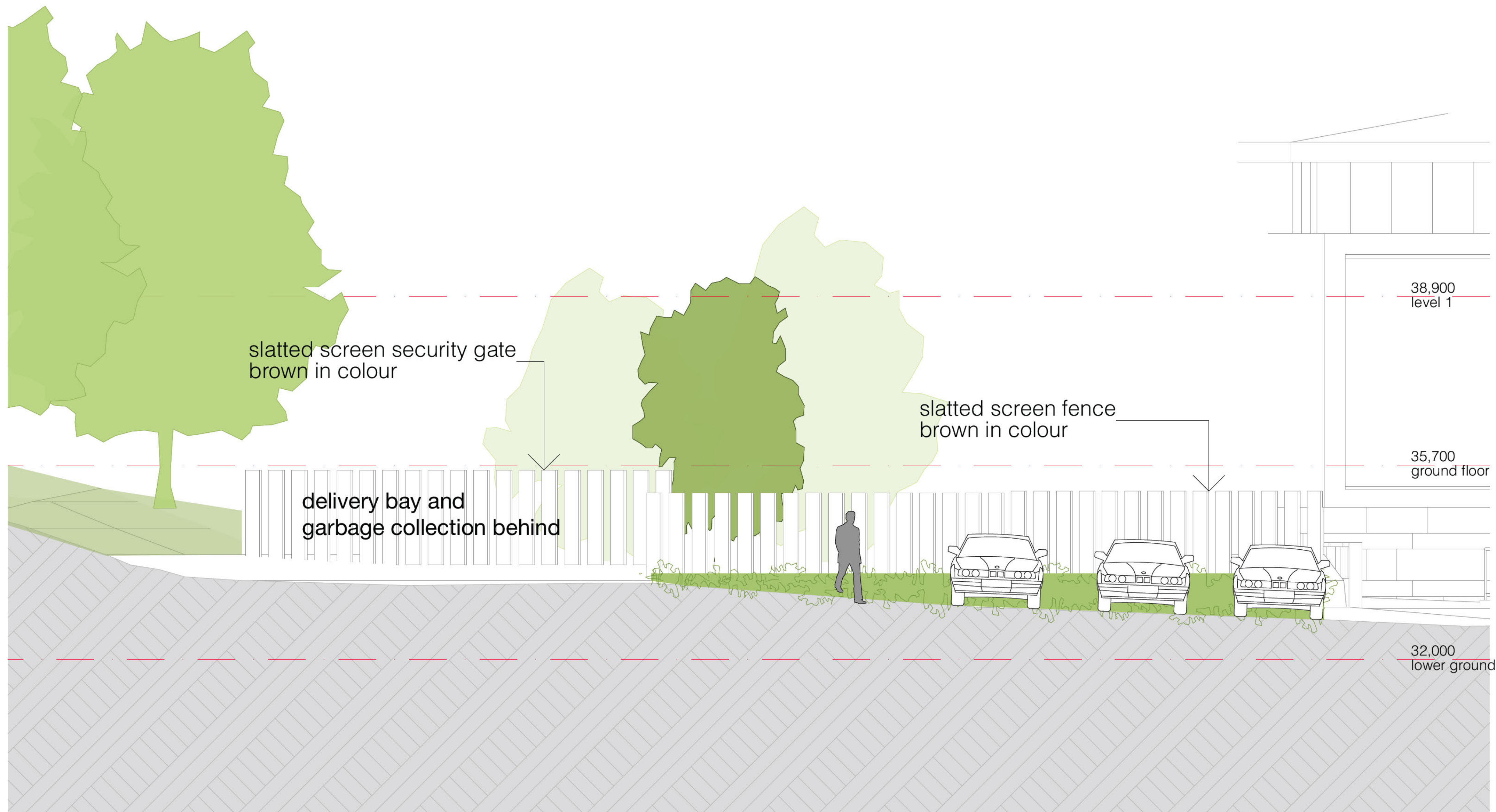


**DA**  
**1102**

**issue**  
**I**



preliminary not for construction



elevation A 1:50

architect

integrated **DESIGN** group  
architects | bathurst penrith sydney



copyright  
integratedDESIGNgroup pt  
abn 64 115 008 329

nominated architects  
tony mcburney reg#52773  
simon thorne reg#7093

bathurst 02 6332 6206  
penrith 02 4732 4430  
sydney 02 9764 6100  
info@idgarchitects.com.au  
www.idgarchitects.com.au

general notes

1. figured dimensions take precedence over scaled drawings
2. contractors to check and verify all levels datum and dimensions on site
3. all materials and workmanship to be in accordance with current written manufacturers instructions local regulations and SAA codes
4. conflicting information to be brought to notice of the architect and clarification sought before proceeding with any works
5. all drawings are not for construction and are subject to further design development, consultant input, council and legislative requirements.

date

27/2/19

issue

A

amendment

issue for response to council's RFI

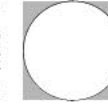
title

**service area elevation**

new church facility  
northlakes salvos | CAMERON PARK

project ref:  
drawn:  
checked:  
scale:

SAL18007  
CQ  
AE  
1:50 @ a2




issue  
**A**



preliminary not for construction



integrated **DESIGN** group  
architects | bathurst penrith sydney

 **Member**  
Australian  
Institute of  
Architects

copyright  
integratedDESIGNgroup p/l  
abn 84 115 006 329

nominated architects  
tony mcburney reg#5273  
simon thorne reg#7093

bathurst | 02 6332 6206  
penrith | 02 4732 4430  
sydney | 02 9764 6100

info@idgarchitects.com.au  
www.idgarchitects.com.au

**general notes**

1. figured dimensions take precedence over scaled drawings
2. contractors to check and verify all levels datum and dimensions on site
3. all materials and workmanship to be in accordance with current written manufacturers instructions local regulations and SAA codes
4. conflicting information to be brought to notice of the architect and clarification sought before proceeding with any works
5. all drawings are not for construction and are subject to further design development, consultant input, council and legislative requirements.

**area schedule**

GFA	
lower ground floor	950.53 m <sup>2</sup>
upper ground floor	1858.27 m <sup>2</sup>
first floor	595.23 m <sup>2</sup>
<b>TOTAL</b>	<b>3,404.03 m<sup>2</sup></b>

**use breakdown**

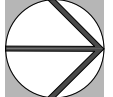
church (incl. mezzanine)	916.47 m <sup>2</sup>
waiting room (upper + lower)	246.63 m <sup>2</sup>
multipurpose	783.77 m <sup>2</sup>
servery	36.15 m <sup>2</sup>
kitchen	62.60 m <sup>2</sup>
play area	170.65 m <sup>2</sup>
offices	262.20 m <sup>2</sup>
storage	223.12 m <sup>2</sup>

date	issue	amendment
20/11/18	A	issue for final coordination

**roof plan**

new church facility  
northlakes salvos | CAMERON PARK

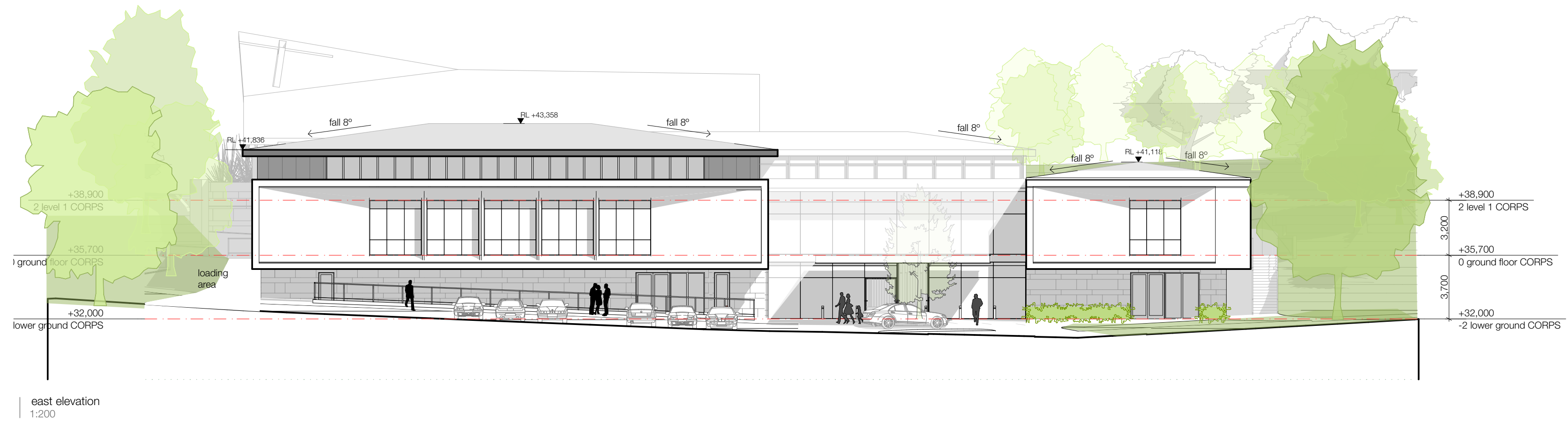
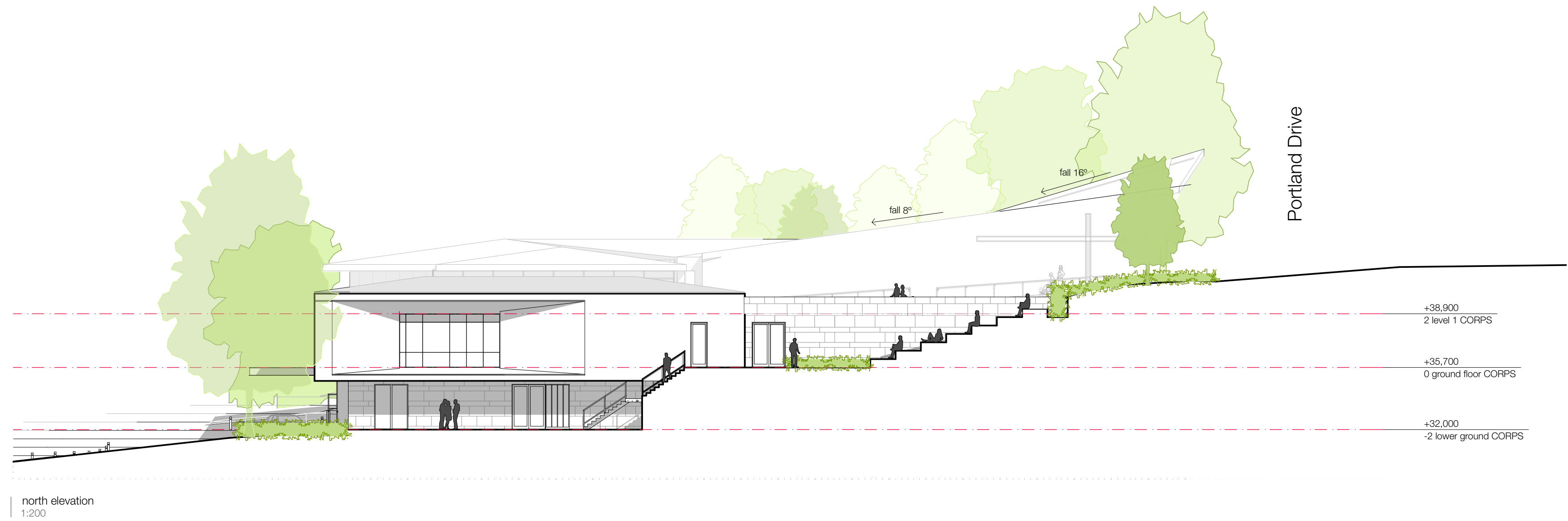
project ref: SAL18007  
drawn: CQ  
checked: AE  
scale: 1:200 @ a2



**D A**  
1103

**issue**  
**A**

preliminary not for construction



architect

integrated **DESIGN** group  
architects | bathurst penrith sydney



copyright  
integratedDESIGNgroup p/l  
abn 84 115 006 329

nominated architects  
tony mcburney reg#5273  
simon thorne reg#7093

bathurst | 02 6332 6206  
penrith | 02 4732 4430  
sydney | 02 9764 6100  
info@idgarchitects.com.au  
www.idgarchitects.com.au

general notes

1. figured dimensions take precedence over scaled drawings
2. contractors to check and verify all levels datum and dimensions on site
3. all materials and workmanship to be in accordance with current written manufacturers instructions local regulations and SAA codes
4. conflicting information to be brought to notice of the architect and clarification sought before proceeding with any works
5. all drawings are not for construction and are subject to further design development, consultant input, council and legislative requirements.

date issue amendment

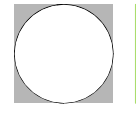
22/8/18	A	issue for pre-DA
7/11/18	B	issue for coordination
8/11/18	C	issue for coordination
20/11/18	D	issue for final coordination

title

elevations 01

new church facility  
northlakes salvos | CAMERON PARK

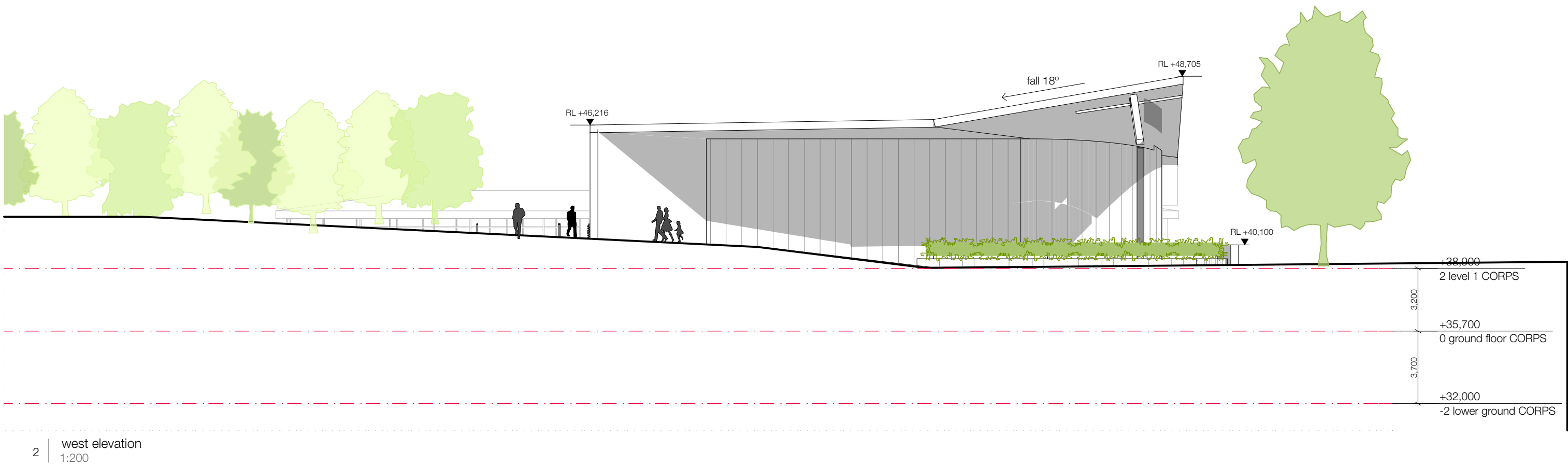
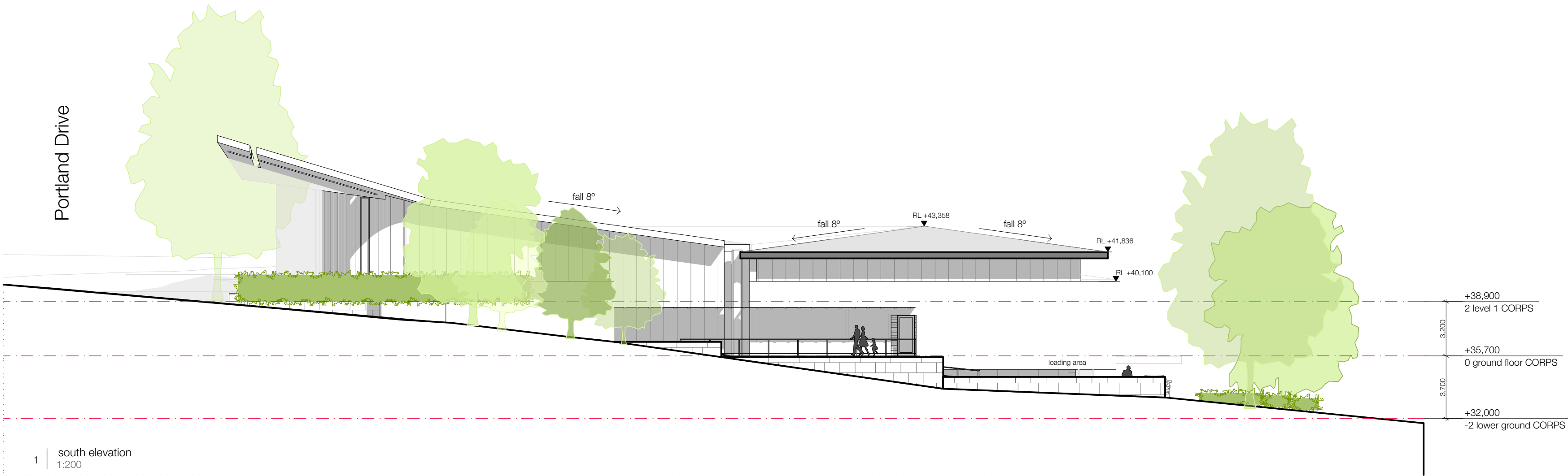
project ref: SAL18007  
drawn: CQ  
checked: AE  
scale: 1:200 @ a2



issue  
D

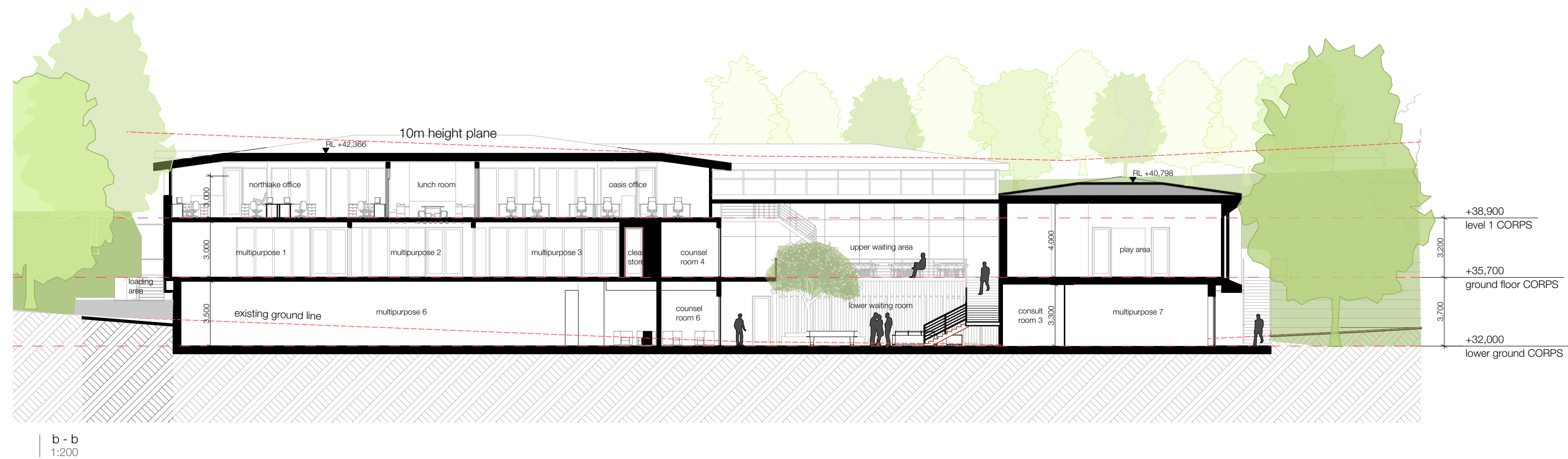
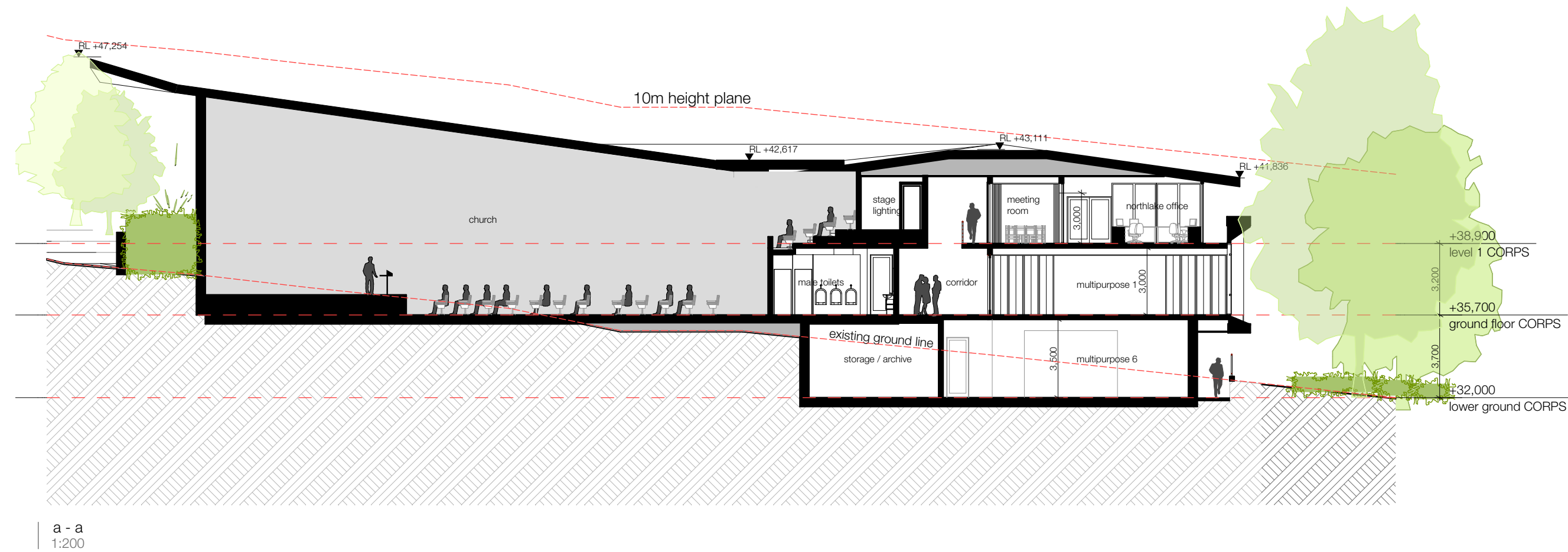


preliminary not for construction





preliminary not for construction



architect

integrated DESIGN group  
architects | bathurst penrith sydney



copyright  
integratedDESIGNgroup p/l  
abn 84 115 006 329

nominated architects  
tony mcburney reg#52773  
simon thorne reg#7093

bathurst 02 6332 6206  
penrith 02 4732 4430  
sydney 02 9764 6100

info@idgarchitects.com.au  
www.idgarchitects.com.au

general notes

1. figured dimensions take precedence over scaled drawings
2. contractors to check and verify all levels datum and dimensions on site
3. all materials and workmanship to be in accordance with current written manufacturers instructions local regulations and SAA codes
4. conflicting information to be brought to notice of the architect and clarification sought before proceeding with any works
5. all drawings are not for construction and are subject to further design development, consultant input, council and legislative requirements.

date issue amendment

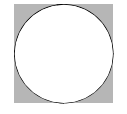
22/8/18	A	issue for pre-DA
7/11/18	B	issue for coordination
8/11/18	C	issue for coordination
9/11/18	D	issue for coordination
20/11/18	E	issue for final coordination

title

sections

new church facility  
northlakes salvos | CAMERON PARK

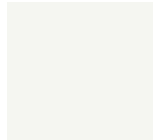
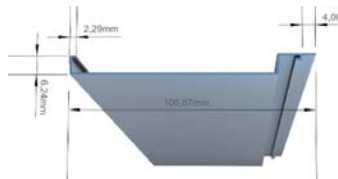


project ref: SAL18007  
drawn: CQ  
checked: AE  
scale: 1:200 @ a2



issue  
E





		reference code	specification	profile	colour
1	painted cement render	CR01	<b>dulux</b> Vivid White™	n/a	
2	architectural feature	AF	<b>Stryum</b> Hickory		
3	Sandstone cladding	SC	<b>Diamond Sawn</b> 300 x 600mm Brown		
4	roof sheeting	RS	<b>Colorbond</b> CUSTOM ORB® Basalt®	